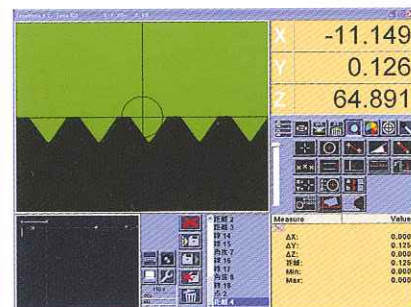


CNC Model (Super Precision CNC Surface/Profile Grinder)



Optical Groove Grinding

Standard Features

- Air Bearing Spindle (1.1kw/2P)
- 240L Temp Control Type Coolant Tank (w/Paper Filter)

MSG-618CNC-HS (1 Axis Hydrostatic)

Shown with Optional Accessories

	Description	Metric	Inch
Capacity	Table Work Surface	150×350mm	6×13-3/4"
	Table Movement	165×480mm	6-1/2×18-3/4"
	Max. Height	320mm	12-1/2"
Table	Table Speed	1-20m/min.	3'-66'./min.
		200spm/20mm Stroke	200spm/3/4"
	One Revolution of Dial	0.1/1/10mm	.01/.01/.1"
	One Division of Dial	0.001/0.01/0.1mm	.0001/.001/.01"
	Continuous Feed(5-150%)	50-1000mm/min.	2-40"/min.
Crossfeed	One Revolution of Dial	0.01/0.1/1.0mm	.001/.01/.1"
	One Division of Dial	0.0001/0.001/0.01mm	.00001/.0001/.001"
	Continuous Feed	0-1000mm/min.	0-20"/min.
	Min.Increment	0.0001mm	.00001"
	Increment Feed	0.0001-5mm	.00001-.005"
Head	One Revolution of Dial	0.01/0.1/1.0mm	.001/.01/.1"
	One Division of Dial	0.0001/0.001/0.01mm	.00001/.0001/.001"
	Continuous Feed	0-1000mm/min.	0-20"/min.
	Min.Increment	0.0001mm	.00001"
	Increment Feed	0.0001-1.3mm	.00001-.005"
Wheel	Wheel Size	180×20×31.75mm	8×3/4×1-1/4"
	Spindle Speed(Air Bearing Spindle)	0-8000rpm	
Motor	Spindle(Air Bearing Spindle)	1.1kw 2P	
	Longitudinal Feed	Linear Motor	
	Crossfeed	Fanuc a'4/4000i AC 1.4kw	
	Vertical Feed	Fanuc a'4/4000i AC 1.4kw	
	CNC	NC System	Fanuc 16i-MB
Controlled Axis		2 Axis	
Simultaneous Axis		2 Axis	
Power	Power Supply	3 Phase 200-220V 50/60Hz	
	Power Required	15kVA	
Floor Space	Width×Lenght×Height	2300×2060×1900mm	91"×81"×75"
Gross Weight		2500Kg	5510lbs